

AgroBIG is a development initiative with a mission to help create value addition along agricultural value chains. The aim is to generate jobs and increased incomes for farming households, processors and other value chain actors.

The second phase of AgroBIG Programme (2017-2021) builds on and scales up the successes of the first phase implemented from 2013-2017.

AgroBIG cooperates with other development initiatives such as REILA (Responsible and Innovative Land Administration Project), with the joint interest to encourage farmers to use their land certificates to ease access to loan finance.

www.agrobig.org
www.facebook.com/AgroBIG2

Technical assistance for the Programme is provided by NIRAS



AgroBIG is implemented in Amhara National Regional State by farmers and their cooperatives, traders, processors and retailers in partnership with district councils and regional bureaus.

AgroBIG is part of the long-term bilateral cooperation between the governments of Ethiopia and Finland.



Amhara
Regional State



Ulkoministeriö
Utrikesministeriet
Ministry for Foreign
Affairs of Finland



Tapping
the potential
of agriculture
value chains

AgroBIG
Phase II
2017-2021

AgroBIG

Agro-business Induced Growth Programme in
Amhara National Regional State

AgroBIG Office, New ACSI Building, 3rd floor, P.O. Box 1458, Bahir Dar, Ethiopia
Tel. +251 582 209 195. Email: info@agrobig.org www.agrobig.org

11/2018

Income generation through market-oriented farming and agro-processing



AgroBIG supports interventions that **improve competitiveness of smallholders, processors and traders**. Contract-based supply of commodities and local agro-processing is targeted.

The **goal** of AgroBIG is to contribute to progress that enables **agriculture to provide a decent livelihood** in Amhara.

*AgroBIG promotes **access to finance and financial services**, and **strengthens capacities** of value chain actors, particularly women and youth.*

AgroBIG offers two financial services to assist producers, buyers and processors develop their businesses:

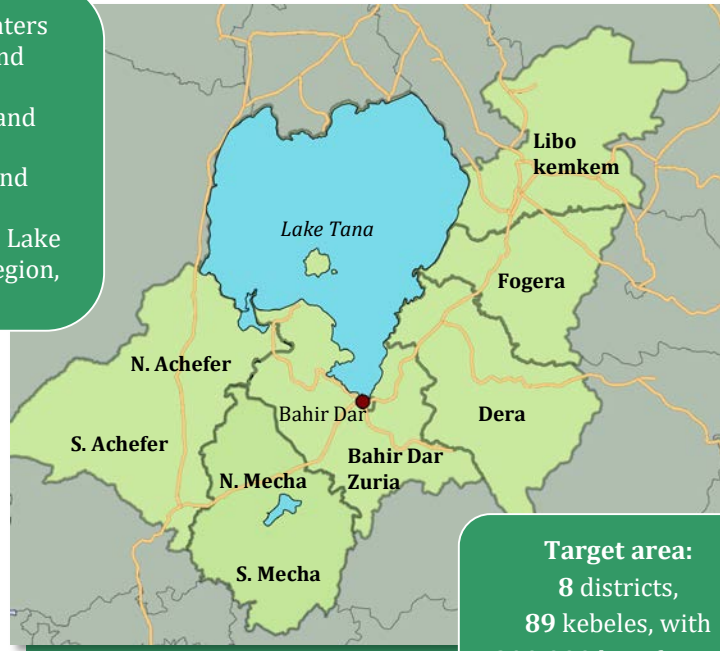
Capacity building of entrepreneurs, cooperatives and farmers is supported through several ways:

- **Micro-, small- and medium-size matching grants** for farmers and enterprises to support development and adoption of new technologies, and improve productivity, post-harvest handling, value addition and marketing of agricultural produce.
- **Loans** for women and youth through Savings and Credit Cooperatives, to enable income creation and jobs, and loans to farmer cooperatives to strengthen their member services.

Grants,
Loans &
Capacity
Building

- **Business coaching and market linkage facilitation** for value chain actors and service providers.
- **Forming and training of women and youth groups** in income generating activities.
- **Technical support to cooperatives** to improve their member services and bargaining power.
- **Strengthening farmers' access** to extension services.

AgroBIG implementers are cooperatives and their unions, input suppliers, traders and other enterprises, farmers, women and youth groups, and authorities around Lake Tana in Amhara Region, Ethiopia.



Target area:
8 districts,
89 kebeles, with
300 000 beneficiaries



AgroBIG supports value chain and agribusiness development



Linking suppliers with markets

AgroBIG assists producers and cooperatives in forging strong market linkages with buyers.

The Programme supports market forums, cluster platforms and other events where value chain actors meet to explore new opportunities and develop means to overcome supply chain bottlenecks.



Promoting good agricultural practices

AgroBIG supports selected model farmers to test and demonstrate improved agronomic and post-harvest practices, such as soil fertility management, use of quality seed, and sorting and grading of harvested produce.

Good agricultural practices increase productivity and improve competitiveness.



Targeted support to women and youth

The Women and Youth Loan Fund focuses on women and youth groups and individuals to improve their farming, processing, packaging, storage and distribution capacity, and also supports groups who for example provide services to farmers.

Micro-, small- and medium-size grants are provided to boost job creation and investments by agri-entrepreneurs. Women and youth in particular are encouraged to apply.



Improving cooperatives' member services

AgroBIG supports the capacity building of cooperatives to respond to the increasing demand for loans, market linkage facilitation and other member services.

Producer cooperatives are offered loans for working capital through the Cooperative Loan Fund that is managed by Cooperatives' Savings and Credit Unions.

Local Savings and Credit Cooperatives (SACCOs) are engaged in managing the AgroBIG revolving loan fund targeting women and youth.



Innovative learning

The Value Chain Facility Fund supports development of innovative techniques and new approaches that enhance value chain development and market access of commodities selected for AgroBIG support.

It also promotes the adoption of new technologies and links between producers and other stakeholders.